



**NEXO-ME**  
MIDDLE EAST



**COMPANY PROFILE**

[www.nexo-me.com](http://www.nexo-me.com)

# PROFESSIONAL SERVICE OFFERINGS

- ▶ PROJECT MANAGEMENT
- ▶ ARCHITECTURE & BIM SERVICES
- ▶ STRUCTURAL ENGINEERING
- ▶ CIVIL ENGINEERING
- ▶ FLOOD & STORMWATER MANAGEMENT
- ▶ PAVEMENT & MATERIALS ENGINEERING
- ▶ DESIGN SERVICES
- ▶ MASTER PLANNING
- ▶ URBAN DESIGN
- ▶ LANDSCAPE DESIGN
- ▶ MEP ENGINEERING
- ▶ AIRPORT PLANNING & INFRASTRUCTURE
- ▶ RAILWAY PLANNING & INFRASTRUCTURE



## WE ADD VALUE

WE ADD VALUE THROUGHOUT THE EXECUTION OF OUR PROJECT MANAGEMENT AND BUILT ENVIRONMENT PROJECTS, BRINGING OUR SPECIALIST TEAMS TOGETHER TO ANSWER THE MOST DAUNTING OF CHALLENGES WITH INNOVATIVE SOLUTIONS.





## ABOUT US

### Engineering Excellence, Delivered Globally!

Nexo-ME is a pioneering built environment consultancy, committed to advancing infrastructure and development across the Middle East and beyond. With a 25-year track record in the African Continent, Nexo-ME is proud to bring its proven expertise to the United Arab Emirates and the global stage.

## OUR EXPERTISE

At Nexo-ME, we specialize in Project Management, Architectural and BIM Services, Civil and Structural Engineering, Master Planning and Landscape Design, as well as Airport & Railway Planning and Infrastructure Development. Our multidisciplinary team of expert architects, engineers, and project managers is driven by innovation, sustainability, and a passion for excellence. Headquartered in the UAE, we deliver forward-thinking, technology-driven solutions tailored to meet the evolving demands of modern infrastructure. With a client-centric approach and a commitment to global best practices, Nexo-ME is your trusted partner in delivering impactful, future-ready projects that shape the built environment.

## OUR AFFILIATIONS



# PROJECT & PROGRAM MANAGEMENT

At Nexo-ME, our Project and Program Management services are designed to deliver exceptional outcomes across complex, multi-disciplinary developments. With a deep-rooted understanding of the built environment and decades of regional and international experience, we bring strategic leadership, operational control, and stakeholder alignment to every phase of a project lifecycle.

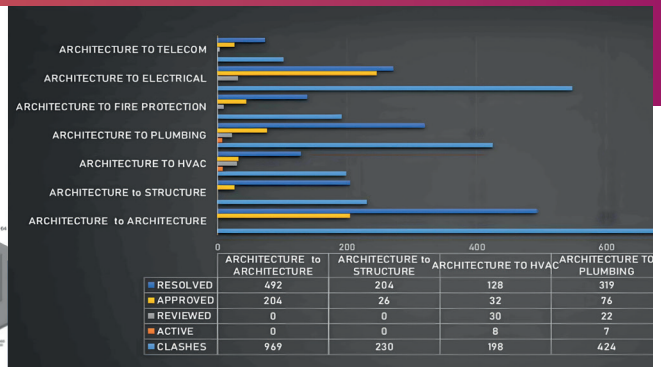
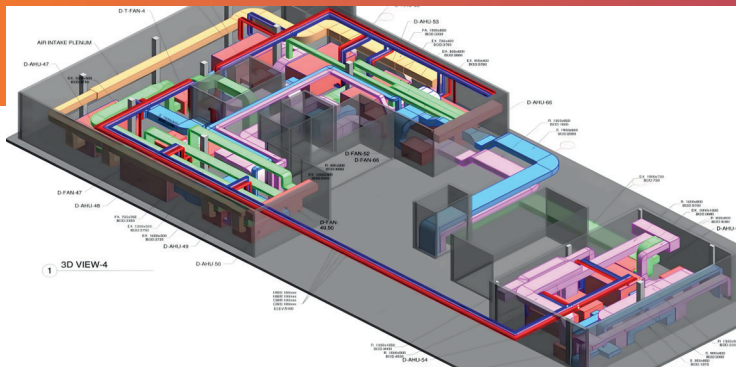
Our approach integrates proven project management methodologies with the latest tools and technologies to ensure that cost, time, quality, and scope objectives are consistently met. Whether overseeing a single asset or an entire capital program, our team acts as a trusted partner—driving value, minimizing risk, and ensuring seamless delivery from concept through to completion.

## Our services include:

- End-to-end Project & Program Management
- Procurement Strategy & Contract Administration
- Construction Supervision & Progress Monitoring
- Schedule, Budget & Quality Control
- Stakeholder Engagement & Reporting
- Risk Management & Mitigation Planning
- Governance & Compliance Oversight
- Claims and Dispute Resolution Support

By combining technical proficiency with strong leadership and a client-focused mindset, Nexo-ME ensures that every project we manage is delivered to the highest standards—on time, on budget, and beyond expectations.





## ARCHITECTURE & BIM SERVICES

At Nexo-ME, our Architecture and Building Information Modeling (BIM) services are rooted in innovation, precision, and design excellence. We deliver intelligent architectural solutions that balance aesthetics, functionality, sustainability, and constructability—shaping spaces that are both visionary and viable. Our architectural team brings creative insight and technical depth across a wide range of sectors, including commercial, residential, industrial, educational, healthcare, and aviation. Every project is approached with a holistic design philosophy that considers context, culture, and client aspirations.

Our integrated BIM capabilities enhance collaboration, accuracy, and efficiency throughout the project lifecycle. By leveraging cutting-edge 3D modeling, coordination tools, and data-driven workflows, we ensure seamless communication among stakeholders and optimize design-to-construction transitions.

### Our services include:

- Conceptual & Detailed Architectural Design
- Master Planning & Urban Design
- Sustainable & Climate-Responsive Architecture
- 3D Visualization & Rendering
- Full BIM Integration & Management
- Clash Detection & Coordination
- Model-Based Quantity Take-offs & Construction Sequencing
- BIM for Facilities Management (BIM-FM)

With a strong commitment to innovation and design integrity, Nexo-ME transforms ideas into enduring architectural landmarks while driving efficiency through digital excellence. We don't just design buildings—we design the future.

# STRUCTURAL ENGINEERING

At Nexo-ME, our Structural Engineering services are driven by precision, resilience, and innovation. We provide safe, efficient, and cost-effective structural solutions that support a wide range of infrastructure and building projects—from high-rise developments and commercial complexes to transportation hubs and industrial facilities.

Our structural engineers combine deep technical expertise with creative problem-solving to deliver designs that meet both performance and aesthetic goals. We understand the critical role structural systems play in the integrity, functionality, and longevity of a project, and we work collaboratively with architects, contractors, and clients to ensure the seamless integration of form and function. Whether working on new construction or complex refurbishments, we apply advanced analytical tools, modern construction techniques, and international codes to deliver tailored solutions that stand the test of time.

## Our services include:

- Structural Design & Analysis (Steel, Concrete, Timber, Composite)
- Design Optimization & Value Engineering
- Seismic, Wind & Dynamic Load Analysis
- Foundations & Retaining Structures
- Structural Assessments & Feasibility Studies
- Reinforcement Detailing & Shop Drawings
- Structural Rehabilitation & Retrofit Design
- Peer Reviews & Independent Design Verification

At Nexo-ME, we engineer with purpose—ensuring that every structure we design is safe, efficient, sustainable, and aligned with the client's vision and the project's broader goals.



# CIVIL ENGINEERING & INFRASTRUCTURE SERVICES

At Nexo-ME, our Civil Engineering and Infrastructure Services are foundational to the delivery of resilient, efficient, and future-ready developments. From master-planned communities and industrial platforms to critical transport and utility infrastructure, we provide comprehensive engineering solutions that support economic growth and urban transformation.

Our civil engineering team brings robust expertise in planning, design, and implementation of infrastructure systems that meet the highest technical and environmental standards. With a clear focus on sustainability and long-term performance, we integrate modern engineering practices with regional and international regulations to ensure reliable, context-sensitive solutions. We work closely with public and private sector clients to deliver infrastructure that enhances connectivity, supports livability, and enables long-term asset performance.

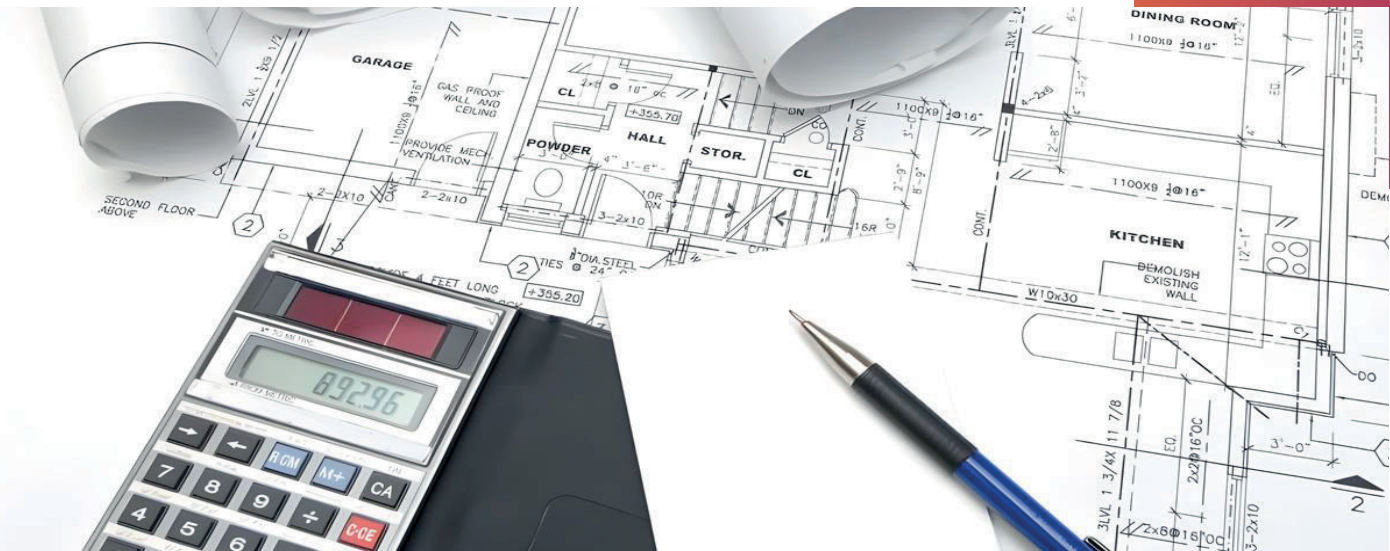
## Our services include:

- Roads & Highways Design
- Bulk Earthworks & Platform Preparation
- Water Supply & Distribution Systems
- Stormwater Management & Flood Control
- Sanitary Sewer & Wastewater Design
- Utilities Coordination & Infrastructure Master Planning
- Site Grading, Drainage, and Pavement Design
- Construction Documentation & Site Supervision

At Nexo-ME, we take pride in building the backbone of communities and cities—ensuring that every project we undertake contributes to a more connected, efficient, and sustainable built environment.



# QUANTITY SURVEYING



At Nexo-ME, our Quantity Surveying services are focused on delivering financial certainty, cost efficiency, and value optimization across all phases of the project lifecycle. We support clients in making informed decisions that balance budget, quality, and performance—ensuring that investments translate into successful, well-managed outcomes. With a keen understanding of the construction industry and regional market dynamics, our team of experienced quantity surveyors applies rigorous cost control methodologies and transparent reporting practices. From pre-contract planning to post-contract administration, we provide proactive commercial management that safeguards project viability and stakeholder confidence.

## Our services include:

- Cost Planning & Feasibility Studies
- Bills of Quantities & Tender Documentation
- Procurement Advice & Contract Strategy
- Tender Evaluation & Negotiation Support
- Post-Contract Cost Management
- Value Engineering & Life-Cycle Costing
- Change Management & Variations Control
- Final Account Preparation & Settlement

At Nexo-ME, we see cost management as more than just numbers—it's about creating lasting value. Through disciplined processes, collaborative engagement, and deep sector expertise, we help our clients achieve commercial success with confidence and clarity.

# PAVEMENT & MATERIALS ENGINEERING

At Nexo-ME, our Pavement and Materials Engineering services form a critical part of infrastructure development, supporting the long-term performance, durability, and safety of roads, airports, industrial platforms, and other transport-related assets. We combine deep technical expertise with advanced testing methodologies to deliver cost-effective, fit-for-purpose solutions tailored to specific geotechnical and environmental conditions. Our engineering team understands the lifecycle demands of pavement systems and material behavior under diverse loading and climatic conditions. Through detailed investigations, innovative material selection, and robust structural design, we help clients minimize maintenance costs and maximize asset longevity

## **Our services include:**

We work across sectors—including highways, airports, ports, and industrial developments—delivering solutions that meet local authority requirements and international standards. At Nexo-ME, we don't just build roads—we engineer long-lasting, high-performance surfaces designed for the future of mobility.



# MASTER PLANNING WITH ARCHITECTURAL & CONCEPT DESIGN

At Nexo-ME, our Master Planning services combine strategic land use with innovative Architectural and Concept Design to create inspiring, functional environments. We integrate visionary architecture with practical urban layouts, ensuring aesthetic appeal and operational efficiency from the early planning stages. Our context-sensitive designs respond to cultural, climatic, and social factors, delivering sustainable, user-centric spaces. From mixed-use developments to public realms, we use 3D modeling and scenario analysis to optimize form and flow. Through a blend of creativity and planning expertise, we shape vibrant, resilient communities with a strong sense of place and purpose.



## URBAN AND LANDSCAPE DESIGN

At Nexo-ME, we specialize in Urban and Landscape Design that creates dynamic, sustainable, and people-centric environments. By integrating urban planning with landscape architecture, we develop functional, visually engaging spaces that reflect natural context, cultural heritage, and community needs. Our designs prioritize connectivity, accessibility, and green infrastructure to promote well-being and ecological balance. From master-planned communities to urban regeneration and airport projects, we deliver holistic solutions that enhance biodiversity, support active lifestyles, and ensure climate resilience—through close collaboration with architects, engineers, and stakeholders.



# AIRPORT & RAILWAY INFRASTRUCTURE PLANNING

Nexo-ME offers expert Airport and Railway Infrastructure Planning, delivering efficient, future-ready solutions that meet the demands of modern transportation. We provide strategic planning, design coordination, and project management with a focus on safety, functionality, and regulatory compliance. Our approach integrates site analysis, capacity forecasting, and multi-modal connectivity to optimize operations and passenger experience. From runways to terminals and rail alignments to station design, we ensure precision and scalability. Collaborating with authorities and stakeholders, we apply global best practices and technologies to create resilient, sustainable infrastructure that drives seamless mobility and regional growth.



## MECHANICAL & ELECTRICAL ENGINEERING

At Nexo-ME, our Mechanical & Electrical Engineering services deliver smart, sustainable solutions that enhance building performance and occupant comfort. We design integrated systems—HVAC, plumbing, power, lighting, fire protection, and BMS—that align with each project's architectural and functional goals. Our multidisciplinary team focuses on energy efficiency and sustainability, using advanced modeling and green building principles to meet global standards and local regulations. From commercial and industrial projects to airports and mixed-use developments, we ensure seamless, high-performance MEP integration for safe, efficient, and future-ready environments.



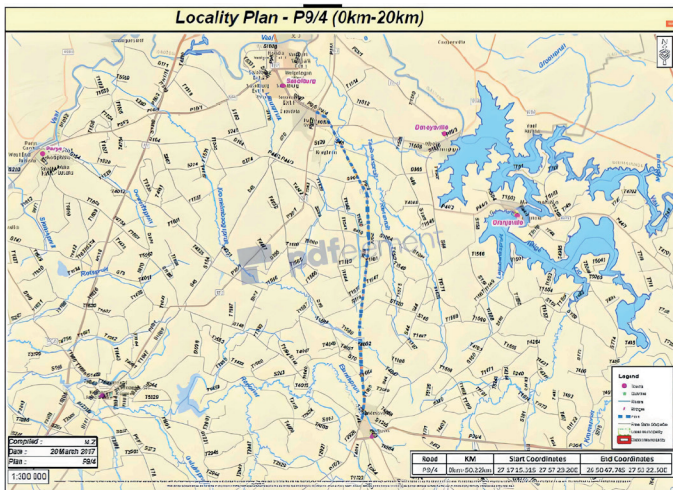
# OUR PROJECTS



## THE UPGRADE OF MAIN ROAD P9-4 – R57 – SOUTH AFRICA

### GENERAL INFORMATION

Project Start	Date 02 Sep 19
Project End	Date 02 Sep 21
Project Value	\$ 95 Million
Project Location	Located between Sasolburg and Heilbron
Sector	Roads & Transport
Client Name	Free State Department of Police, Roads & Transport



### SYNOPSIS

#### DESCRIPTION

The Upgrade of P9-4 (Section km0.000 to km20.000) is part of the FSDOPRT Capital Projects Programme and was regarded as a flagship project. The scope of work for P9-4, includes, but is not limited to:

- Investigations into the geology, climate, traffic, existing pavement, and infrastructure.
- Traffic Impact Assessment (TIA) and sensitivity analysis.
- Geometric needs assessment, including widening and the addition of auxiliary lanes.
- Improvements to the capacity, LOS and alleviating congestion.
- Improvements to the stormwater drainage management.
- Improvements to the pavement structure to achieve the Structural Design Period (SDP)
- Overall safety improvements.

All designs conformed to the relevant guideline documents whilst the construction work was administered in accordance with COLTO and GCC 2015

#### ACHIEVEMENTS AND OUTCOMES

- Portion of the alternate route to the N1 and N3 has been restored to provide safe mobility for pedestrians and vehicles.
- Strengthening of the existing pavement.
- Improved rideability and skid resistance.
- Congestion at major intersections has been alleviated.



**CAPACITY IMPROVEMENT OF MAIN ROAD P416 IN TOWN – R56**

**GENERAL INFORMATION**

Project Start	06 Nov 15
Project End	05 May 18
Project Value	\$ 52 Million
Project Location	uMzimkhulu
Sector	Roads & Transport
Client Name	KwaZulu Natal Department of Transport



**SYNOPSIS**

DESCRIPTION

The Upgrading of P416 in town is part of the uMzimkhulu Development Programme of the KZN DOT and was regarded as a flagship project. The scope of work for P416, includes, but is not limited to:

- Upgrading from a two-lane single carriage way.
- Widening of the slip lanes.
- Improvements to facilities to safely accommodate pedestrian and public transport.
- Traffic Impact Assessment (TIA) and intersection analysis.
- Improvements to the geometric alignment, capacity and Level of Service (LOS).
- Improvements to the stormwater drainage management and the installation of culvert crossings.
- Improvements to the pavement structure to achieve the Structural Design Period (SDP)
- Overall safety improvements.

All designs conformed to the relevant guideline documents whilst the construction work was administered in accordance with COLTO and GCC 2010.

ACHIEVEMENTS AND OUTCOMES

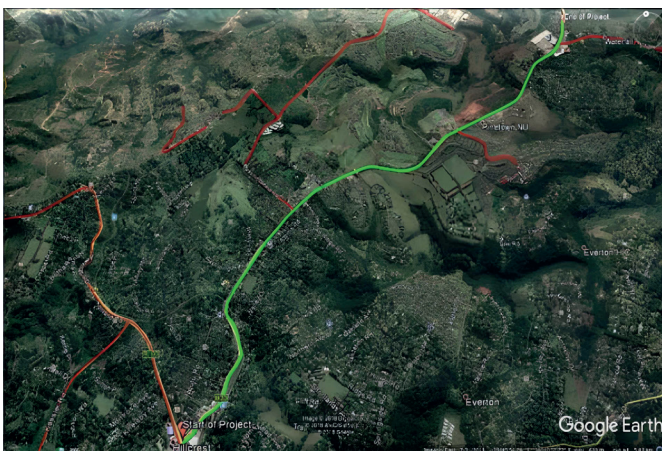
- The town of uMzimkhulu has been renowned for flooding in the past – upgrades and improvements to the stormwater infrastructure has assisted with alleviating this disaster.
- Unhindered access and mobility to the town has boosted economic development.
- Congestion has been alleviated.



## UPGRADE OF MAIN ROAD P255 – SOUTH AFRICA

### GENERAL INFORMATION

Project Start	22 Jul 11
Project End	02 Sep 15
Project Value	\$ 85 Million
Project Location	Located between Hillcrest and Waterfall
Sector	Roads & Transport
Client Name	KwaZulu Natal Department of Transport



### SYNOPSIS

#### DESCRIPTION

The Upgrading of P255 (Section km1.068 to km7.089) is part of the KZN DOT Capital Projects Programme and was regarded as a flagship

project. The scope of work for P255, includes, but is not limited to:

- Upgrading from a two-lane single carriage way to a two-lane dual carriageway for majority of the length.
- Construction of a new road over rail structure.
- Traffic Impact Assessment (TIA) and intersection analysis.
- Improvements to the geometric alignment, capacity and Level of Service (LOS).
- Improvements to the stormwater drainage management.
- Improvements to the pavement structure to achieve the Structural Design Period (SDP)
- Overall safety improvements.

All designs conformed to the relevant guideline documents whilst the construction work was administered in accordance with COLTO and GCC 2010.

#### ACHIEVEMENTS AND OUTCOMES

- First full-scale project in South Africa to use WMA manufactured using foamed bitumen.
- Preserving virgin materials with the innovation of WMA with 25% reclaimed asphalt.
- Reducing waste in landfills by re-using concrete waste material in the layer works and sidewalks.
- Improving the LOS and the flow of traffic.

# RAILWAY INFRASTRUCTURE



CRH250

CRH380A – ZEFIRO



## CHINA HIGH SPEED RAIL

- Supply and Delivery of High Speed Train Sets with Bombardier Sifang Transportation.
- Supply and Delivery of Complete Propulsion Package, including traction motors and converter units.
- Supply and Delivery of Gearboxes and Couplers.
- Integration of the total propulsion package in the High-Speed Train Design for the CRH380 and CRH250.
- Training and Development of the Service Staff for the Operator.
- After Sales Service, Spares Supply and Service Personnel for a period of 10 years

## CRRC DALIAN LOCOMOTIVES

- Supply and Delivery of 100 High Powered Bombardier Traxx Locomotives
- Supply and Delivery of High-Powered Propulsion Package for the Dalian Locomotives
- Training and Development of Service Staff and Drivers of the High Powered Locomotives
- After Sales Service, Spares Supply and Service Personnel for a period of 5 years



## NORTH-EAST LINE

- Manufacturer: Alstom
- No. of units: 25 six-car trains
- In service: Executed Jun 2003
- The NEL trains are the first fully automated and driverless trains in Singapore.
- It receives power from the overhead catenary system.
- The trains were designed and manufactured in Valenciennes, France.





## KLEINGENOEG BISI RIVER BRIDGE – SOUTH AFRICA

### GENERAL INFORMATION

Project Start	Apr 2010
Project End	Mar 2011
Project Value	\$ 20 Million
Project Location	Located at the Bisi river in proximity of the Kleingenoeg community
Sector	Roads, Rail & Transport
Client Name	Department of Transport, Kwazulu Natal



### SYNOPSIS

#### DESCRIPTION

The Kleingenoeg Bisi River Bridge is a new pedestrian bridge that is being constructed over the Bisi River. The new bridge has a span of 75 meters which required the construction of bases, columns and five simply supported decks.

#### ACHIEVEMENTS AND OUTCOMES

The Kleingenoeg communities couldn't cross the river during periods of extensive rainfall as the people cannot get to the either end of the community. The Kleingenoeg Bisi River Bridge bridge provides desperately needed access and links the communities on either end making it easy for members of the community to cross and access the Kleingenoeg area, Elukolweni J School, Jericho JS School, Gabhamanzi P School, Imfundwenhle Primary, Nhlalwane Primary and Dubandlela High School.



## EMERGENCY REPAIR TO THE M4 HIGHWAY - SOUTH AFRICA

### GENERAL INFORMATION

Project Start	Apr 2010
Project End	Mar 2011
Project Value	\$ 10.3 Million
Project Location	Located at the Bisi river in proximity of the Kleingenoeg community
Sector	Roads, Rail & Transport
Client Name	Department of Transport, Kwazulu Natal



### SYNOPSIS

#### DESCRIPTION

The repair of the M4 was regarded as an emergency type project after the flooding which occurred on the 10 December 2019. Through the IDMS appointment the core responsibilities, includes, but is not limited to:

- Full time technical support.
- Specialist advisory services during design and construction.
- Review proposed designs and construction.
- Assisting with complex engineering problems.
- Stakeholder engagement.
- Representing the office of the DDG for the KZN DOT.

All designs conformed to the relevant guideline documents whilst the construction work was administered in accordance with COLTO, SANS and GCC 2015.

#### ACHIEVEMENTS AND OUTCOMES

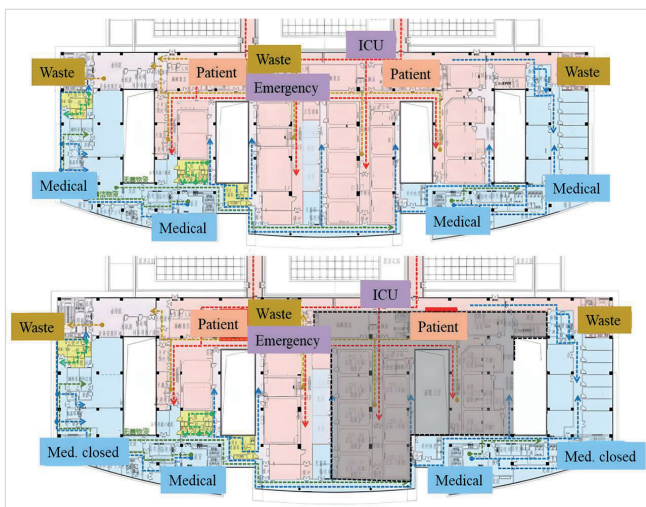
- The installation of a 900mm HDPE pipe that was welded on site.
- Longest length of continuous pipe laid within KZN – limiting the opportunities for future failures.
- Stabilisation and repair of the embankments on either side.
- Opening of the road and alleviating traffic on the N2.



## 100-BED HOSPITAL – ABU DHABI, UAE

### GENERAL INFORMATION

Project	100-Bed Hospital – Abu Dhabi, UAE
Client:	Private Client
Location	Abu Dhabi, United Arab Emirates
Status	Concept and Preliminary Design Completed



### SYNOPSIS

#### DESCRIPTION

Nexor Middle East was commissioned to deliver the conceptual and preliminary design for a state-of-the-art 100-bed hospital in Abu Dhabi. The facility is envisioned as a modern, patient-centered healthcare environment aligned with international medical planning standards and tailored to local regulatory requirements. Our multidisciplinary team provided architectural planning, civil and structural engineering input, and coordinated all spatial and functional requirements to ensure optimal patient flow, staff efficiency, and future scalability. Special focus was placed on sustainability, infection control, and integration of advanced medical technologies.

#### KEY COMPONENTS OF THE DESIGN INCLUDE

- Inpatient wards with a mix of private and semi-private rooms
- Outpatient clinics and diagnostic imaging suites
- Emergency department with separate access and triage zones
- Operating theatres, ICU, and recovery units
- Administrative and support services
- Parking and access strategy for patients, staff, and service vehicles

This project demonstrates our capability in healthcare infrastructure planning, bringing together deep technical expertise and a strong understanding of operational healthcare needs to deliver efficient and future-ready facilities.



## ETIHAD RAIL – PASSENGER STATION, RAS AL KHAIMAH

### SYNOPSIS

#### GENERAL INFORMATION

Project Etihad Rail – Passenger Station, Ras Al Khaimah  
 Client: Etihad Rail  
 Location Ras Al Khaimah, United Arab Emirates  
 Scope BIM Modelling and MEP Shop Drawing Production

#### DESCRIPTION

Nexor Middle East was engaged to support the development of the Etihad Rail Passenger Station in Ras Al Khaimah by providing high-level BIM modelling services and delivering clash-free, coordinated MEP shop drawings for construction.

Working closely with the main design and construction teams, our scope included:

- Developing a federated 3D BIM model for all MEP systems in compliance with project BIM Execution Plans (BEP) and LOD requirements

- Running clash detection and coordination processes using industry-standard platforms to resolve conflicts between MEP services and structural/architectural elements

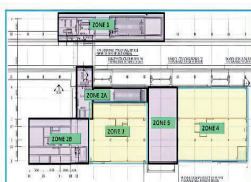
- Producing fully coordinated 2D MEP shop drawings directly from the model, ensuring alignment with site requirements and installation sequences

- Supporting the contractor team through BIM-based design validation and constructability reviews

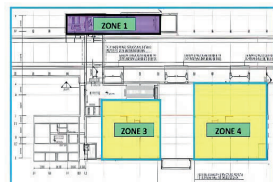
Our involvement helped streamline on-site execution, reduce rework, and ensure all MEP services were constructible, accessible, and aligned with the overall station design. This project highlights Nexor's technical expertise in transport infrastructure and BIM-driven delivery for large-scale, complex developments in the UAE.

#### MBZ STATION STATUS

ZONE AREAS:

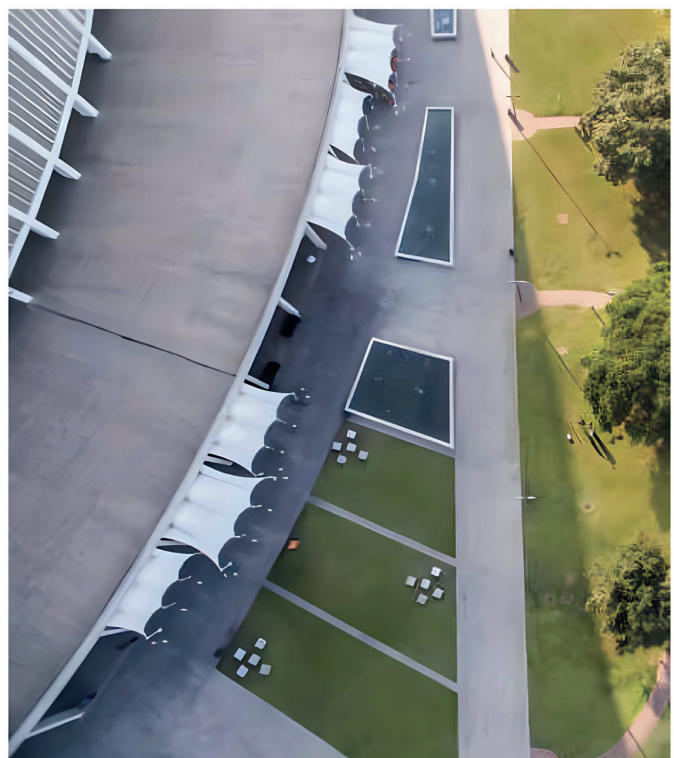


GROUND FLOOR LEVEL



FIRST FLOOR LEVEL

# STADIUM PRECINCT DESIGN





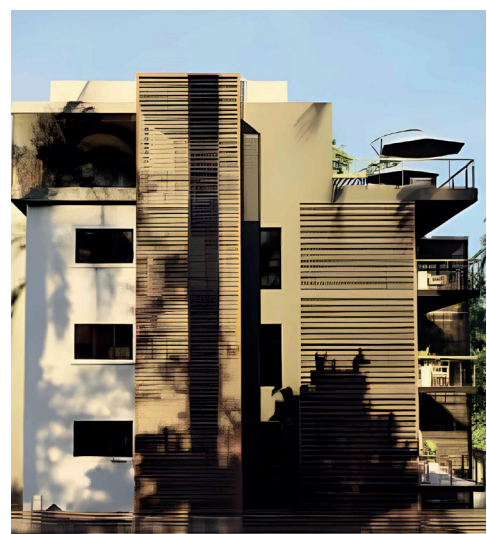
**AWARDED THE PRESIDENTS AWARD FROM THE INSTITUTE OF LANDSCAPE**



**RESIDENTIAL APARTMENT BLOCK**



**COMMERCIAL**



**COMMERCIAL**

# MANAGEMENT STAFF



## ABULAZIZ HADI ALSAADI - Partner / Business Development

Mr Abdulaziz is a distinguished figure in the UAE's business landscape, serving as our local Emirati partner and Business Development Manager of Nexo-ME Engineering Consultancy. With a profound influence across various sectors in the country, his visionary leadership and extensive network have been pivotal in steering our company towards unprecedented growth and innovation. Abdulaziz's role extends beyond corporate borders; he is actively involved in several philanthropic activities and is a prominent member of various boards and councils dedicated to the economic and social development of the UAE.



## PREVEN NAICKER (Pr Snr Arch Tech & Pr.CPM) - CEO / Partner

Preven Naicker joined our Consulting Firm in 2013 as a group Executive of Nexor SA. He currently holds the position of Chief Executive Officer and Partner at Nexo-ME. Apart from having qualifications in Architecture and Project Management, he is also a registered Professional Senior Architectural Technologist and a Professional Construction Project Manager with 25 years' experience in the built environment. Preven has a vast knowledge of the built environment sector with specialisation in respect of property development, property management, Airports Infrastructure, Commercial and Residential projects. His knowledge of infrastructure procurement and associated processes span over Private and Public Sectors as well as State owned entities or Parastatals. He is also an associate member of the Association of Arbitrators



## JERMAINE MAISTRY (Pr.Techni.Eng, PMP & CPD) - COO / Partner

Jermaine is a Professional Civil Engineering Technician, registered with the Engineering Council of South Africa (ECSA), a certified Project Management Professional (PMP) and Certified Project Director (CPD). With 29 years of industry experience, Jermaine brings a rare blend of technical depth and leadership excellence to complex transportation and civil infrastructure projects across the Middle East and Africa. Throughout his career, Jermaine has successfully led multi-disciplinary teams in the planning, design, and delivery of major infrastructure developments, including highways, arterial roads, utilities, and urban development frameworks. His extensive project portfolio reflects his strategic insight, hands-on technical knowledge, and ability to drive projects from concept to completion—on time, within budget, and to international standards. As Chief Operating Officer and Partner at Nexo-ME, Jermaine plays a critical role in operational leadership, client engagement, and project execution.



## SATISH RAGUBHIR (QS & Pr.CPM) - Director / Partner

Satish is a highly respected QS and Project Manager with over 20 years of experience in the built environment sector. He is also a certified Professional Construction Project Manager and serves as a Director and Partner at Nexo-ME, where he plays a key leadership role in driving strategic growth, operational delivery, and project excellence across the firm's portfolio. With a strong foundation in cost consultancy, contract administration, and project management, Satish has successfully delivered a wide range of projects across the infrastructure, commercial, residential, and public sectors. His expertise spans the full project lifecycle—from feasibility studies and tendering to execution, financial control, and closeout. Satish is known for his precision in cost planning, his ability to negotiate and manage complex contracts, and his commitment to delivering projects that meet client expectations in terms of time, budget, and quality.



## YASMIN HASHIM KHALIFA (BSc, MBA, CPMP, CCMP & CBDM) Business Development Director

Yasmin is our Business Development Director. She holds an MBA in Project Management, a Bachelor's degree in Architecture, and certifications in Project Management (CPMP) and Contract Management (CCM), and has a UAE Golden Visa. With over 20 years of experience, she has mastered managing and coordinating complex design projects, ensuring adherence to the highest quality standards, and delivering exceptional solutions. Her portfolio includes overseeing projects collectively valued at half a billion dollars. Her career encompasses successfully leading and expanding business development for prestigious projects across the UAE, KSA, Italy, and Sudan. With a profound passion for innovative and sustainable design, she aims to leverage her extensive expertise to advance industry practices while mentoring and guiding engineers to achieve excellence in their careers.

# KEY TECHNICAL STAFF



## PROF. AHMED ELSHARIEF (PhD) - Geotechnical & Dam Expert

Professor Ahmed, over his extensive career has obtained his Masters Degree in Civil Engineering and Ph.D in Geotechnical Engineering from the Purdue University in the USA. With over 40 years of experience he has a proven track record in conducting impactful research and designs for the public and private sectors. His expertise includes managing geotechnical projects, overseeing field and laboratory investigations, providing foundation recommendations and reports for all types of structures, failure investigations of buildings and dams. He is skilled in coordinating with multidisciplinary teams and contributing to the success of large-scale civil engineering projects. Prof. Ahmed is also an active member and Vice-President of Sudan Engineering Society (SES), as well as a founder of Sudan Society of Soil Mechanics and Geotechnical Engineering.



## Dr. OSMAN ABDALLA (PhD) - Bridge & Structures Expert

Professor Osman has obtained his BSc and MSc in Civil Engineering from the University of Khartoum in Sudan and his Ph.D. in Structural Engineering from the University of Purdue in the USA. Prof. Osman has over 40 years of practical experience in the field of structural engineering. During these years he has made tremendous contributions in working with clients of all industries, performed high quality studies and engineering designs for several large projects. He has been instrumental in the preparation of contract documents for projects of all industries, ensured overall project quality control including projects engineering design for compliance with engineering principles international standards, client's requirements and related technical specifications. He is a member of Sudan Engineering Society and Sudanese Engineering Council.



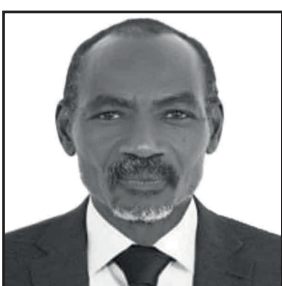
## AJMER SINGH KAIRON (MSc) - Rail & Airport Expert

Ajmer is graduate of the University of Leicester (Bachelor of Engineering, 1st Class), he has also completed a Masters Degree in Rail Systems Engineering while on a Land Transport Authority Scholarship at the University of Sheffield. As a proponent of a Systems Engineering approach, he has also completed a Dual Masters in Systems Engineering and Management from the MIT School of Engineering and Sloan's Business School while on a Fulbright Scholarship. He is a highly experienced rail systems specialist and infrastructure expert who is regularly consulted by corporate leaders in the region on railway systems be it high speed rail, suburban rail, mass rapid transit systems and light rail systems. In addition, he is consulted on other areas such as infrastructure development, construction, lean manufacturing and on site safety management.



## TAREK EWEIDA (BSc, MBA, PMP) - Road & Traffic Expert

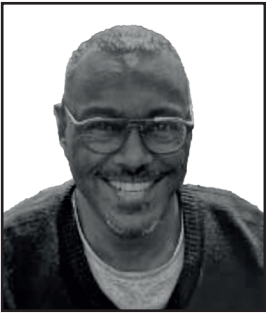
Mr. Tarek Eweida, a Bsc, MBA, PMP, ST, an Experienced Head with a demonstrated history of working in the civil engineering industry. He is skilled in Transportation Engineering, Highway Design, Infrastructure Engineering and Project Management. Having more than twenty eight (28) years of experience, Tarek Eweida has had the opportunity to work on complex projects in various countries, particularly the Middle East and North Africa regions. Currently at the senior director level, his experience includes extensive general management, project/program management, high level technical management of complex designs, business development, strategic management and client relations. In the recent years, Tarek has given special interest to Corporate Social Responsibility and Sustainable Business. Accordingly, he got wealth of experience in this field through academic studies, professional accreditations. In addition to his Bsc., in civil engineering, Tarek Eweida holds an MBA from the University of Cumbria UK, a Project Management Professional (PMP) accreditation from PMI, USA and an Orange Badge Sustainable Transportation Professional (STP) accreditation from the Greenroads Foundation, USA.



## YOUSIF TIBIN MUSA (MSc) - Senior Structural Design Engineer

Mr Abdulaziz is a distinguished figure in the UAE's business landscape, serving as our local Yousif has his Masters Degree in Civil Engineering, specialising in structural engineering and has over 35 years of experience. Over the last three decades, Yousif has been instructing courses related to the analysis and design of reinforced concrete structures, dynamics of structures, plastic analysis, concrete technology, and bridge design for both undergraduate (BSc and Diploma) and postgraduate students (MSc and H.Diploma) in various institutions such as Building and Road Research Institute (BRRI), and Faculties of Engineering (UoK, and SUST). Yousif possesses extensive expertise in formulating strengthening systems for various structures including RC Structures, buildings, pump houses, bridges, dams, stadiums and warehouses.

### Dr. TAREK ABUZAID (PhD) - Hydrology Expert



Dr. Tarek has more than twenty (23) years of experience as hydrology and hydraulic engineer in flood mitigation for governorates, roads, and citizen plots projects located in Saudi Arabia, United Arab Emirates, and Afghanistan. He also has experience in environmental and infrastructure projects located in Egypt, Qatar, Iraq, Sudan, Uzbekistan, and United Arab Emirates. Dr. Tarek graduated as Civil Engineer from Cairo University in 2002 awarding Very Good with Honor Degree and ranked the ninth. In 2008, He was awarded Master of Science (M. Sc.) in Hydraulics from Cairo University, Faculty of Engineering. In 2019, He was awarded Doctor in Philosophy (Ph.D.) in Hydrology and Water Resources Science from Cairo University, Faculty of Engineering. His responsibilities include the preparation of flood mitigation and storm water drainage designs for different governorates and road drainage projects. He has strong experience in 1D and 2D modeling and analysis watershed, preparing rainfall-runoff models, assessment modeling of existing storm water systems, conducting site visits for site reconnaissance, coordinating with stakeholders, and preparing conventional and innovative alternatives. He has strong experience also in 3D modeling of rigid hydraulics structures flow behavior within a certain control volume.

### IBRAHIM SALIH (MSc) - Hydrologist



A highly experienced Civil Engineer with over 40 years of expertise in hydrology, water resources management, and infrastructure development. Holding a Master's degree in Hydrology from the University of Ireland, He has successfully led and contributed to numerous large-scale projects in flood risk assessment, stormwater management, and sustainable water solutions. His extensive career spans government, consultancy, and private sector roles, where he has applied advanced hydrological modeling techniques, climate resilience strategies, and hydraulic design principles to optimize water resource planning. He has a proven track record of developing efficient drainage systems, river basin management plans, and water conservation projects that meet regulatory and environmental standards. An effective leader and mentor, Mr Ibrahim has guided multidisciplinary teams, collaborated with stakeholders, and delivered projects on time and within budget. His deep understanding of water-related infrastructure, combined with a passion for sustainable engineering solutions, ensures that he contributes to resilient and future-proof developments in the built environment.

### MOHAMED AWAD (MSc) - Roads & Highway Engineer



Mr Mohamed is a highly accomplished Civil Engineer with over 30 years of experience in road infrastructure development, structural engineering, and project management. Holding a Master's degree in Roads from the University of Khartoum and an Engineering Diploma in Structural Engineering from the University of Science & Technology in Sudan, he brings a deep technical expertise and a wealth of industry knowledge to every project. Throughout his career, he has played a pivotal role in designing, and maintaining highways, bridges, and urban road networks, ensuring compliance with international engineering standards and sustainable practices. His expertise extends to geometric design, transportation planning, and structural analysis, with a strong focus on delivering cost-effective, durable, and safe infrastructure solutions. With a proven track record of leading multidisciplinary teams, managing large-scale civil projects, and coordinating with government agencies and private sector stakeholders, he is adept at problemsolving and ensuring project delivery within time and budget constraints.

### GAMAL ABDALLA MOHAMED AHMED (BSc, Pg.Dip) - Architectural & BIM Expert



Gamal is a highly skilled Architect and certified BIM Expert with a strong background in integrated design and digital project delivery. With a career spanning over 20 years, Gamal combines architectural creativity with deep technical expertise in Building Information Modelling (BIM) to lead projects from concept through construction with precision and innovation. At Nexo-ME, Gamal plays a dual role—leading architectural design while spearheading BIM strategy and implementation. His ability to translate complex design visions into coordinated, data-rich BIM models ensures seamless collaboration across all disciplines. Proficient in Revit, Navisworks, AutoCAD, BIM 360, and other industry-standard tools, Gamal manages LOD-specific model development (LOD 100–LOD 500), clash detection and resolution, and digital coordination. Gamal is instrumental in preparing BIM Execution Plans (BEPs), setting project-specific modelling standards, and ensuring alignment with ISO 19650 and international BIM protocols. His architectural work is known for its balance of functionality, sustainability, and contextual sensitivity, while their BIM leadership enhances efficiency, reduces rework, and adds measurable value to each project. A strong communicator and collaborative team player, Gamal contributes significantly to Nexo-ME's capability in delivering world-class design solutions.



# NEXO-ME

MIDDLE EAST

☎ +971 50 207 0043 ✉ info@nexo-me.com

🌐 www.nexo-me.com 📍 Abu Dhabi, UAE

